

## **BIC Cloud GRC**

Optimize your organizational risk and control management.





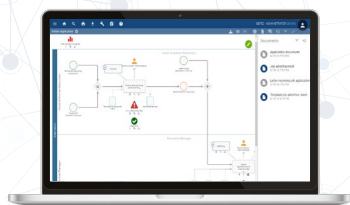
# Governance, Risk & Compliance (GRC)

## Complete guidance, control and surveillance of risks with BIC Cloud GRC

The advancing digitalization offers many new ways of organizational behavior, but also carries new potential risks. At the same time, new legal obligations lead to a rising need for risk management. Only with a combined processing of the fields Governance, Risk, and Compliance (GRC), economic success can be ensured.

With BIC Cloud GRC, companies master the new challenges by implementing a reliable, company-spanning risk management. The solution combines the different views of participating actors to one consistent process basis and steers processes to legal safety and profitability.

The implementation of BIC Cloud GRC nurtures efficient and flexibly adaptable risk and control management. Processes are optimized with a standardized quality assurance. As a complete solution for the structuring and monitoring of organizational behavior, BIC Cloud GRC is the basis for better strategic decisions.



Modeling & Optimization  
BIC Cloud Design

1

### Detection of risks and controls alongside processes

In the first step, the structural and processual organization is integrated. Risks and their relevant controls are inserted directly at the process. Thus, a central connection of all organizational risks is secured alongside the process chain. Compliance regulations are centrally defined and their adherence monitored.



Automatic Execution  
BIC Cloud Workflow

2

### Automatically proceeding workflows for your risk and control management

With predefined regulations, processes are automatically executed according to desired requirements. The danger of manual errors is eliminated and the process flow speed is significantly raised. Exact documentations deliver all relevant information for audits.



Measurement & Monitoring  
BIC Cloud Monitor

3

### Surveillance and measuring in real-time

The process flow can be surveilled live and key figures for decision making are provided. Regular analyses and reports support the continuous improvement process by detecting divergences and optimization potentials.

→ On Premises, Public Cloud or Private Cloud available

## Automatized processes for risk management and ICS

To optimize your processes BIC Cloud GRC offers automatized workflows for the following tasks:

- ✓ Risk detection
- ✓ Risk evaluation
- ✓ Control detection
- ✓ Measuring the adequacy of controls (Test of Design)
- ✓ Measuring the potency of controls (Test of Effectiveness)
- ✓ Detection of risk incidents
- ✓ Control execution
- ✓ Management of measures





# Complete guidance of Governance, Risk & Compliance with BIC Cloud GRC

## Governance

### Organization

Processes and structures are defined according to governance

### Roles and permits

All actors of risk and control management receive allocated responsibilities and rights

### Workflows

Automatically running workflows with embedding of allocated responsibilities are defined

### Document management

Definition and publishing of predefined documents

### Dashboards and reporting

Overview of current risks as well as predefined and individual reports

## Risk

### Detection of risks

Risks are detected with automatized workflows under adherence to release and approval structures

### Evaluation of risks

Risks are evaluated with probability of occurrence and prioritization. With a changing risk context, a workflow supported review of evaluation is conducted

### Risk / Control catalogues

Risk and control catalogues are neatly managed with allocation of processes and incidents

### Internal control system

Securing operative processes as well as the evaluation of measures regarding their suitability and efficacy

## Compliance

### Organizational handbooks + quality management

Managing of organizational handbooks / recorded organizational regulation with flexible adaptation

### Communication

Easy publishing in the online portal - to all parties involved

### Audit support

Automatically documented changes and reports for internal revision and audits

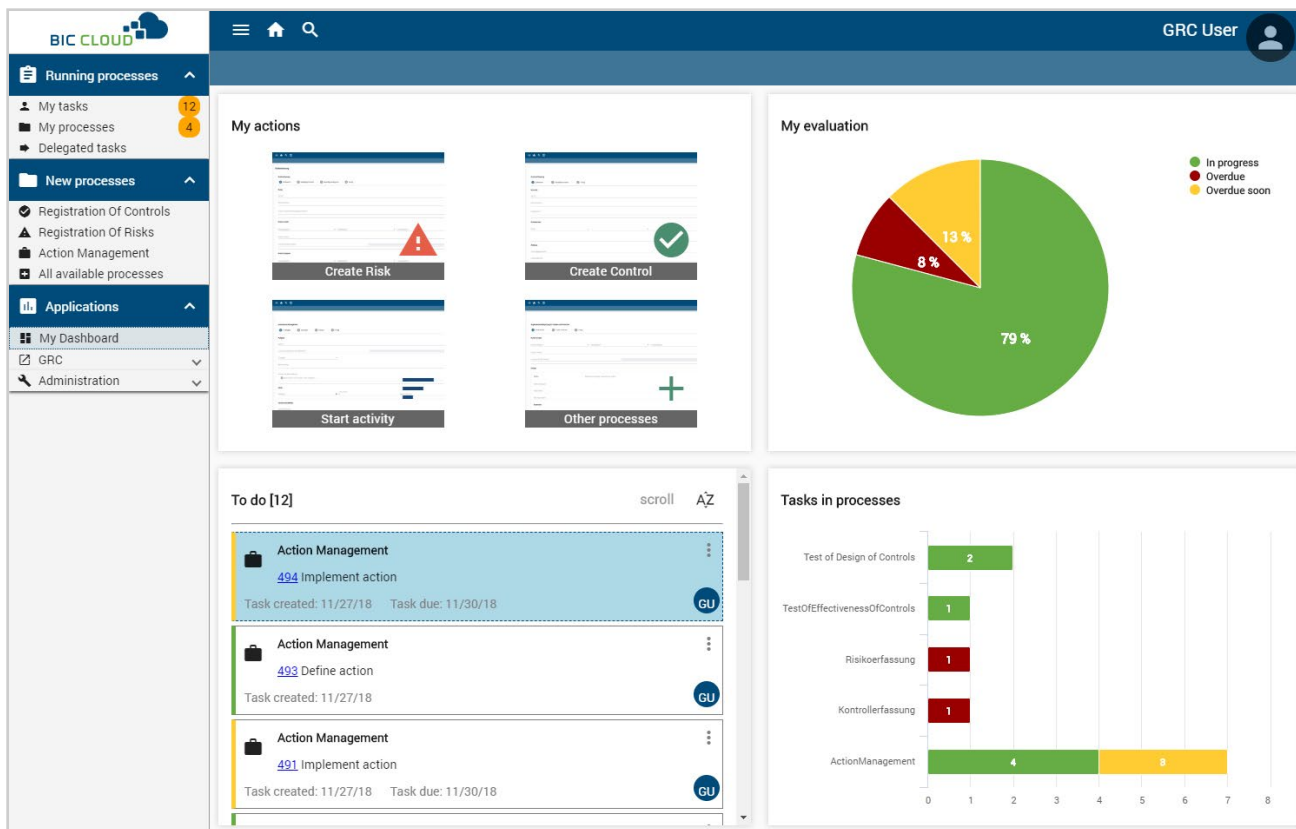
### Continuous improvement process

Quick adaptation and communication of altered compliance regulations

Depending on role and responsibility, BIC Cloud GRC offers adjusted functionalities for:

- ✓ Risk manager
- ✓ Risk controller
- ✓ Control manager
- ✓ Control tester
- ✓ Control executor
- ✓ Measure manager
- ✓ Process manager
- ✓ Management
- ✓ Auditor
- ✓ Internal revisor





**BIC CLOUD** | GRC User

**Registration of risk**

1 Define — 2 Approve context — 3 Approve category — 4 Finished

Risk \*

Risk Description \*

**Risk Context**

Main Context Category Context Subcategory 2nd Context Subcategory

Risk Context \*

Link to Risk Context

Risk Context Responsible \*

**Risk Category**

Main Risk Category Risk Subcategory 2nd Risk Subcategory

Risk Category

Risk Category Responsible \*

Besides the detection of risks, BIC Cloud also actively supports the guidance and execution of controls as well as examinations of suitability and efficacy:

1

#### **Risk detection:**

- ✓ Detection of risks with workflow-based insert masks or transfer from process modeling.
- ✓ During the detection, risks are described by defining attributes, evaluation categories and context.
- ✓ A regular revision and testing of detected risks is possible at all times.
- ✓ Tasks and incidents are documented revision-safe.

2

#### **Risk evaluation:**

- ✓ With changing context, the detection of new risks or after a predefined cyclical timespan, BIC Cloud GRC triggers the workflow for risk evaluation.
- ✓ Based on decision tables, notifications and escalations are initiated.
- ✓ Risk evaluation occurs in an input form. A calculation of risk evaluation with questionnaires or attribute-tables is also feasible.
- ✓ With the notification of new risks or at compulsory review dates, the workflow for risk assessment is also initiated.

3

#### **Measures and controls:**

- ✓ Implementation of measures (singular activities) and controls (regular activities with a defined frequency) occurs workflow-based and revision-safe.
- ✓ Optionally, controls from process modeling can be transferred.
- ✓ Examination of suitability and efficacy of measures ensues through the review in the measures workflow.
- ✓ Status of measure execution is visible both in the dashboard and the evaluation.
- ✓ Furthermore, an automatic generation of measures is possible, based on business rules in BIC Cloud GRC.
- ✓ The solution delivers supporting evaluations like heatmaps and risk portfolio depictions, which are also available as a download.



### **Consulting**

Profit from specialist consulting by GBTEC Software + Consulting AG. We support you with our skilled team of consultants, specialized in the fields of risk management and ICS. We can also support you with the execution of your GRC projects.



# Regulations, standards and Continuous Improvement Process (CIP)

Numerable regulations and standards necessitate a transparent GRC. BIC Cloud offers the fitting prerequisites for a consequential execution. An adaptation to changing laws is also possible quickly and flexibly in BIC Cloud GRC.

## International

- Solvency II
- Basel II
- IFRS
- IAS
- SOX
- EU-GDPR

## Germany

- § 91 s. 2 AktG
- § 289 s. 5 HGB
- § 25a KWG
- GoBS
- MaRisk
- KonTraG
- § 107 ff. AktG
- § 317 IAW § 321 HGB
- IDW PS 981
- BilMoG

## Austria

- § 82 AktG, in § 22 GmbHG and in Art. 1
- § 39 Statute of European Society

## Switzerland

- OR 728a
- FINMA Circular 2017/1

## BIC Cloud GRC supports you with the realization of relevant standards:

- ISO 9001:2008
- ISO 9001:2015
- ISO 14001
- ISO 27001
- ISO 20000
- ISO 19011

- ISO 31000
- ISO TS 16949
- IATF 16949
- ONR 49000
- BSI security guidelines
- FDA

- Ciso
- COBIT
- ITIL
- ISAE 3402
- et al.



**Data protection regulation: Consider the GDPR in your risk management.**  
**Contact us - we will gladly give you more information.**

**Be better than  
you were yesterday.**



**GBTEC Software + Consulting AG**  
Gesundheitscampus-Süd 23  
44801 Bochum  
Germany

Phone: +49 234 97645-100  
Fax: +49 234 97645-101  
Website: [www.gbtec.de](http://www.gbtec.de)  
E-mail: [info@gbtec.de](mailto:info@gbtec.de)

Website:

